



HELPFUL HINTS OF THE EZ TRELLIS

SUPPORTING CUCUMBER PLANTS

For cucumber or pickle plants, it's essential to provide adequate spacing between plants to allow proper growth and prevent competition for nutrients. By lifting cucumber plants off the ground, the EZ TRELLIS system helps minimize the risk of rotting, a common issue when plants come into direct contact with soil. The EZ TRELLIS system is designed to be compact for storage, providing a practical solution for gardeners with limited space for storing gardening equipment.

REDUCED ROT: By lifting plants off the ground, the trellis system helps minimize the risk of rotting, a common issue when plants come into direct contact with soil.

EASE OF HARVEST: Growing plants vertically makes it easier to pick fruits and vegetables while standing up, eliminating the need to bend over. This can be more convenient for gardeners, especially those with mobility concerns.

COMPACT STORAGE: The trellis system is designed to be compact for storage, providing a practical solution for gardeners with limited space for storing gardening equipment.



EZ STEP-IN POST AVAILABLE COLORS

- Midnight Black - Neutral Color
- Apline Green - Blends with Plant
- Sunset Orange - Attracts Pollinators



DEALER INFORMATION

VISIT ezstepproducts.com



INSTRUCTION MANUAL MAXIMIZE YOUR GARDEN HARVEST WITH EZ TRELLIS

SUPPORTS CUCUMBERS, PICKLES
SNAP PEAS & GREEN BEANS



LIFETIME WARRANTY

Proudly 100% Made in the USA, ensuring quality and supporting local manufacturing. **MADE IN USA**

EZ TRELLIS

ELIMINATE ROT & EASY TO PICK

~USE 60" EZ STEP-IN Green Beans

~USE 80" EZ STEP-IN POST with Cucumbers, Pickles Snap Peas

1. SPACE EZ STEP-IN POSTS:

- Place the EZ STEP-IN POSTS 30" apart in a straight line.

2. ATTACH ROD CLAMP AND LOCKING NUT:

- Start from the ground, measure up 6", and attach first rod clamp to the post.
- Place the rod clamp every 6" apart up the post until you have attached all 10.

3. INSERT TRELLIS CLIPS

- Insert the trellis clip into the D-Lock design.
- This design allows you to add two trellis rods, enabling the creation of a continuous trellis fence by placing one alongside the other.

4. ADD HORIZONTAL TRELLIS RODS:

- Insert 36" long horizontal trellis rods into the trellis clips.
- This will allow a 3" overhang on each end of the trellis.
- This step creates the framework for the trellis.

5. PREPARE FOR PLANTING:

- Once the EZ TRELLIS is set up, you're ready to plant your cucumber or pickle plants.
- Plant them in the center of each post, ensuring there is enough room for the roots without touching the roots of neighboring plants.

6. CONSIDERATION FOR PLANTING:

- For cucumber or pickle plants, it's essential to provide adequate spacing between plants to allow proper growth and prevent competition for nutrients.

7. MAINTENANCE:

- Occasionally monitor the plants as they grow, guiding them to climb the trellis for support.
- It's important to follow the specific instructions provided with your EZ TRELLIS system.

END OF SEASON: Removing the horizontal trellis rods at the end of the season and leaving the rod clamp, locking nut, and trellis clip in place is a time-saving strategy for setting up the trellis system in subsequent seasons. This ensures that the essential components of the system remain in position, reducing the effort required for assembly when restarting the garden in the next growing season.

By preserving the key elements, you not only save time but also maintain the structural integrity of the trellis system. This practice can contribute to the longevity and reusability of the EZ TRELLIS system, making it a more convenient and efficient solution for supporting your plants year after year.

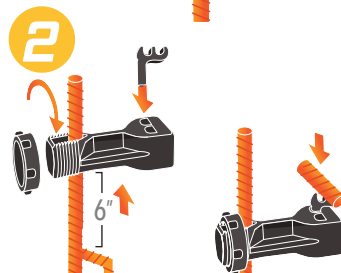
STEP 1

Set EZ STEP-IN POST with foot platform/stabilizer 30" apart. Attach first rod clamp 6" up from the ground.



Step 2

Twist locking nut on rod clamp with notches facing out. Insert EZ TRELLIS clip into D-Lock Design.



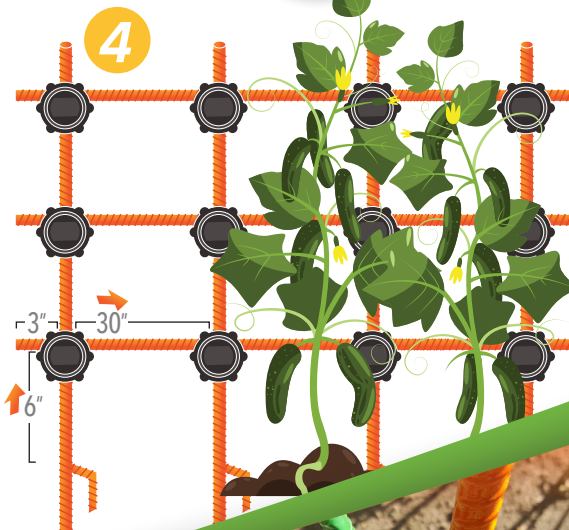
Step 3

Snap EZ TRELLIS rod into trellis clip. Making sure 3" is exposed on the outside edge.



Step 4

Add additional EZ TRELLIS rods and Clamps vertically every 6".



LIFETIME WARRANTY • ECO-FRIENDLY

